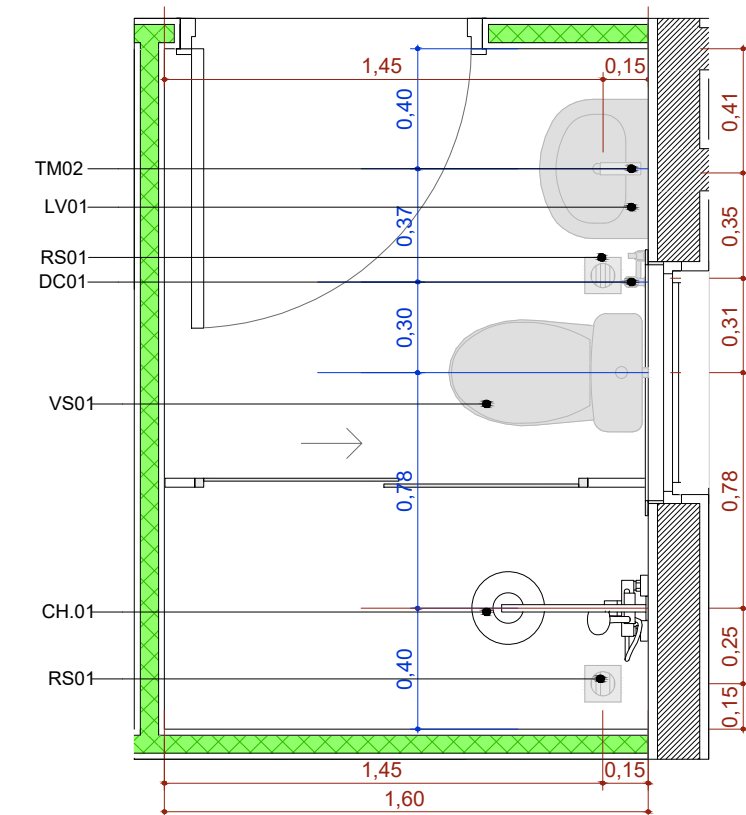


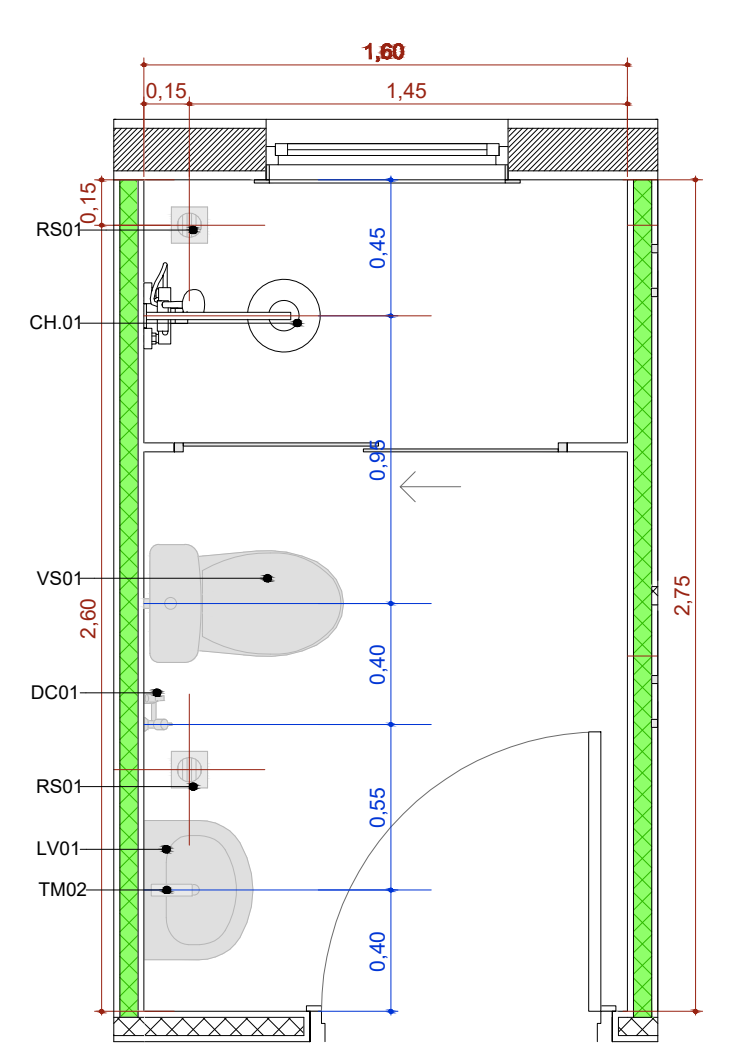
A.M.7 DML

Escala: 1:25



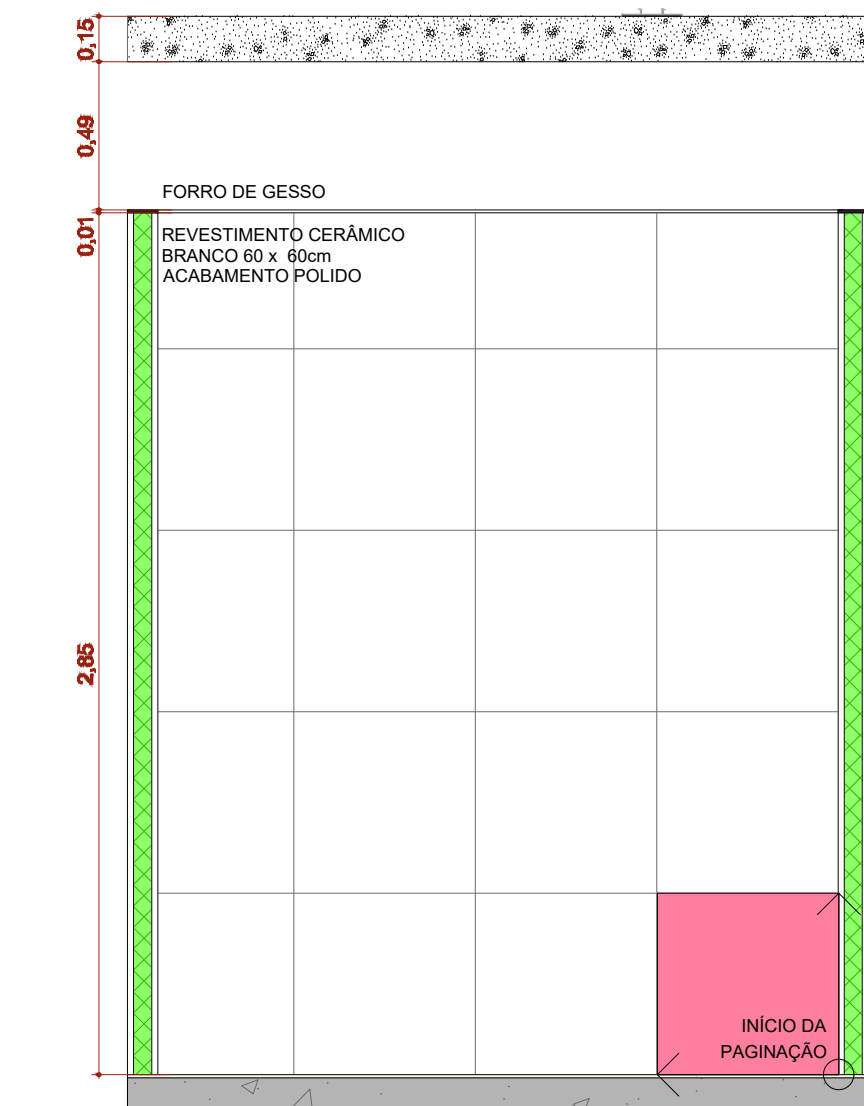
A.M.8 Banh. Func. Masc.

Escala: 1:25



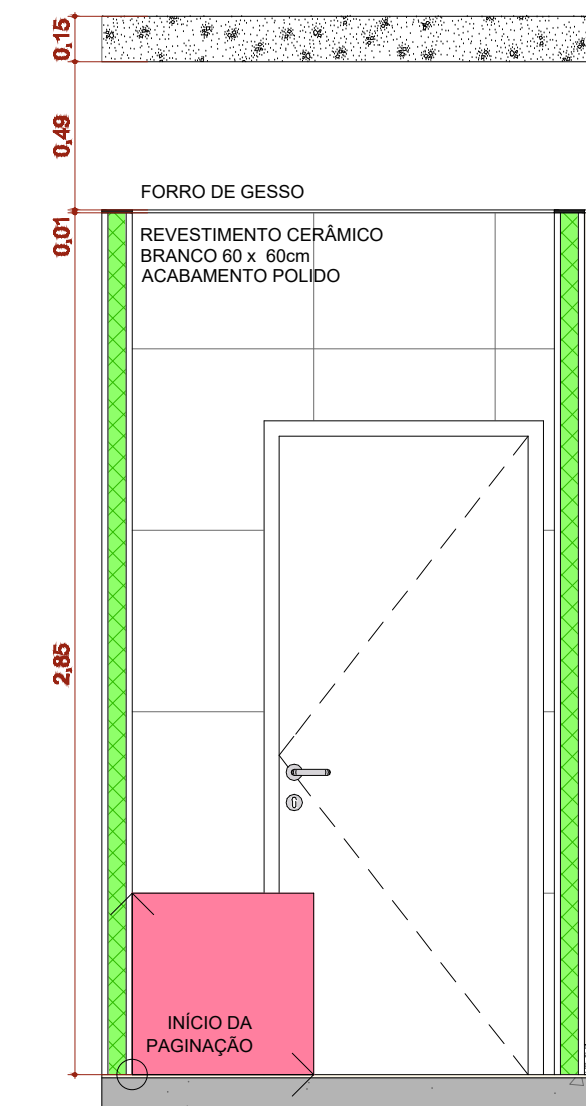
A.M.9 Banh. Func. Fem.

Escala: 1:25



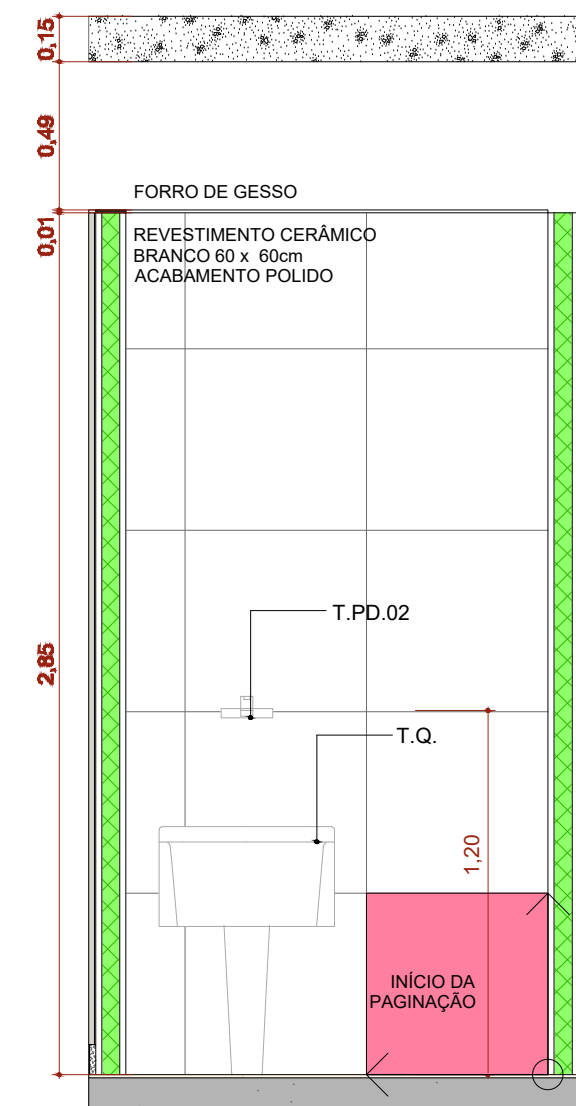
A.M.07 VISTA 1

Escala: 1:25



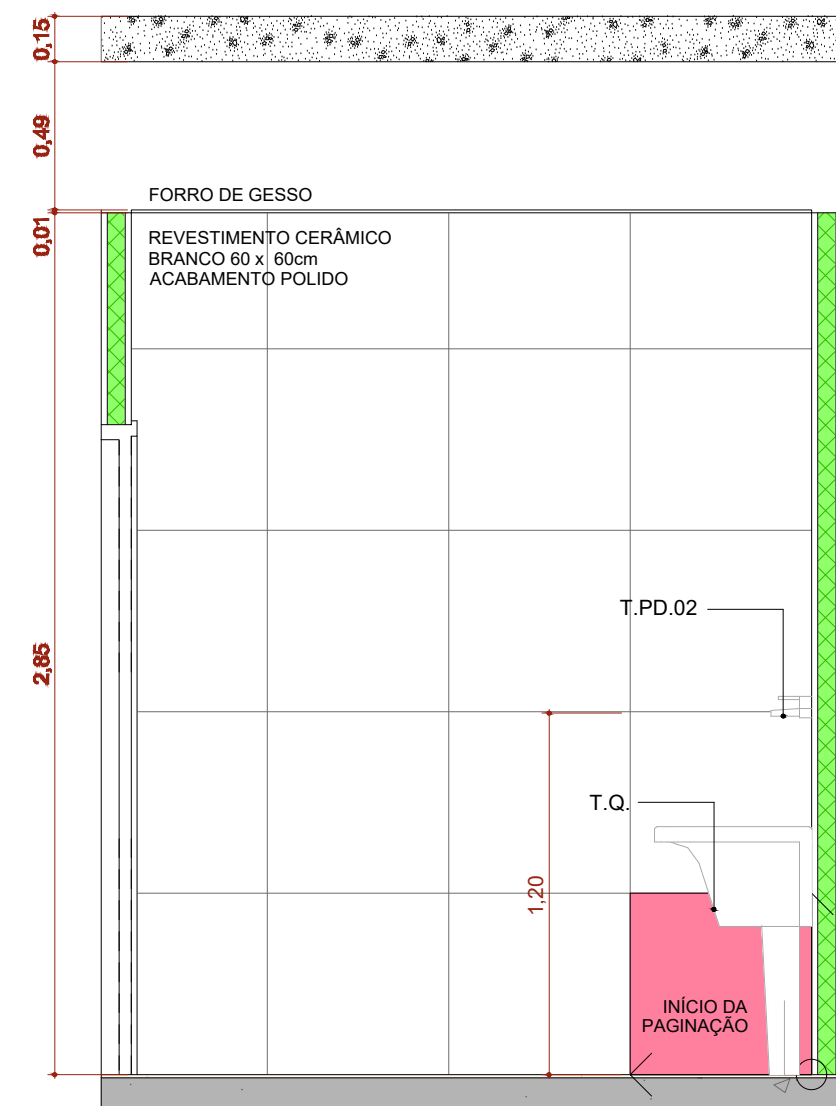
A.M.07 VISTA 2

Escala: 1:25



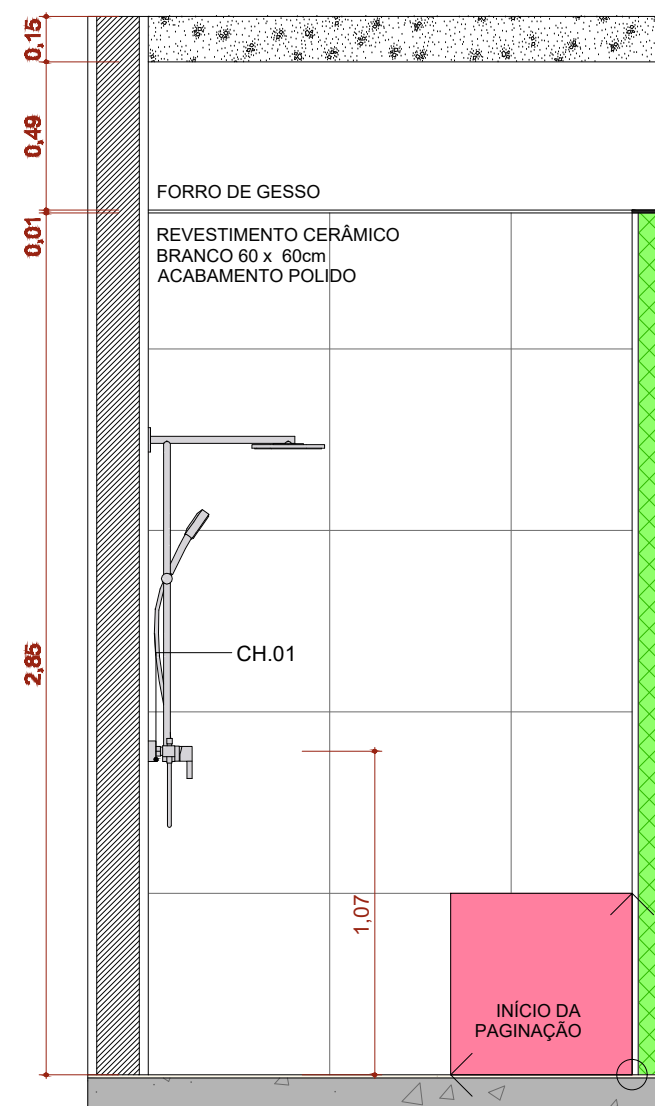
A.M.07 VISTA 3

Escala: 1:25



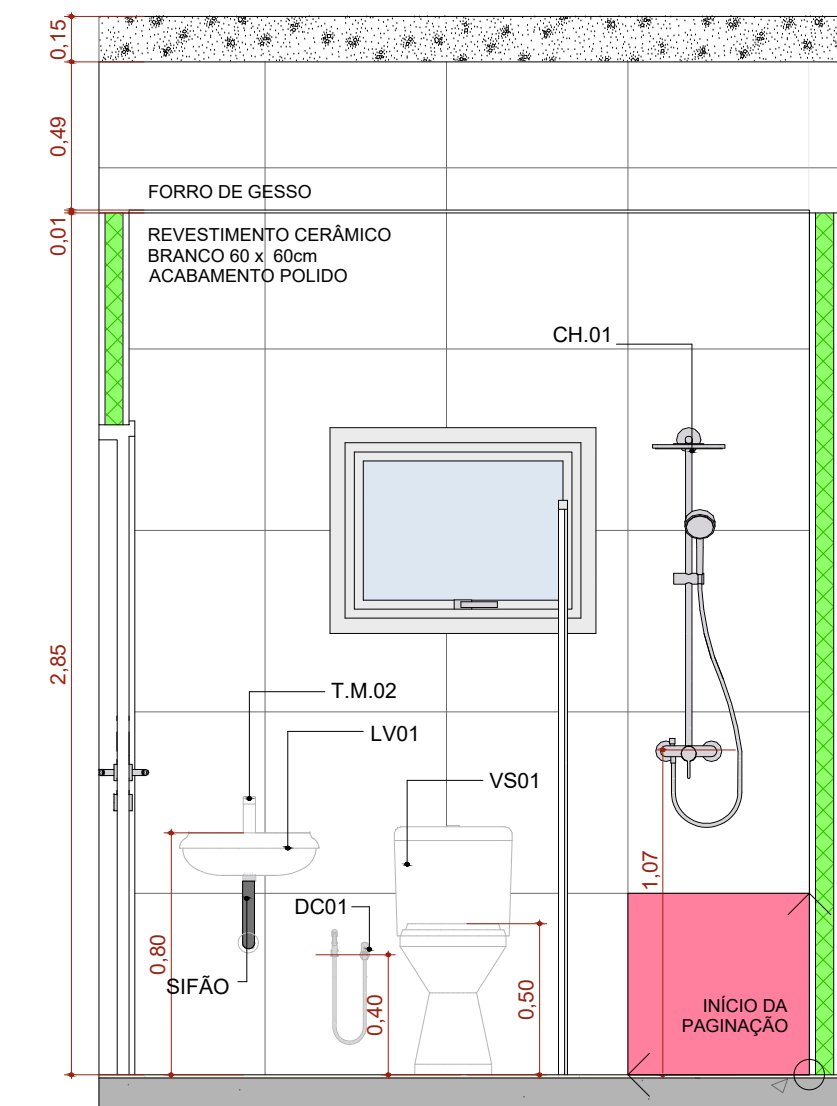
A.M.07 VISTA 4

Escala: 1:25



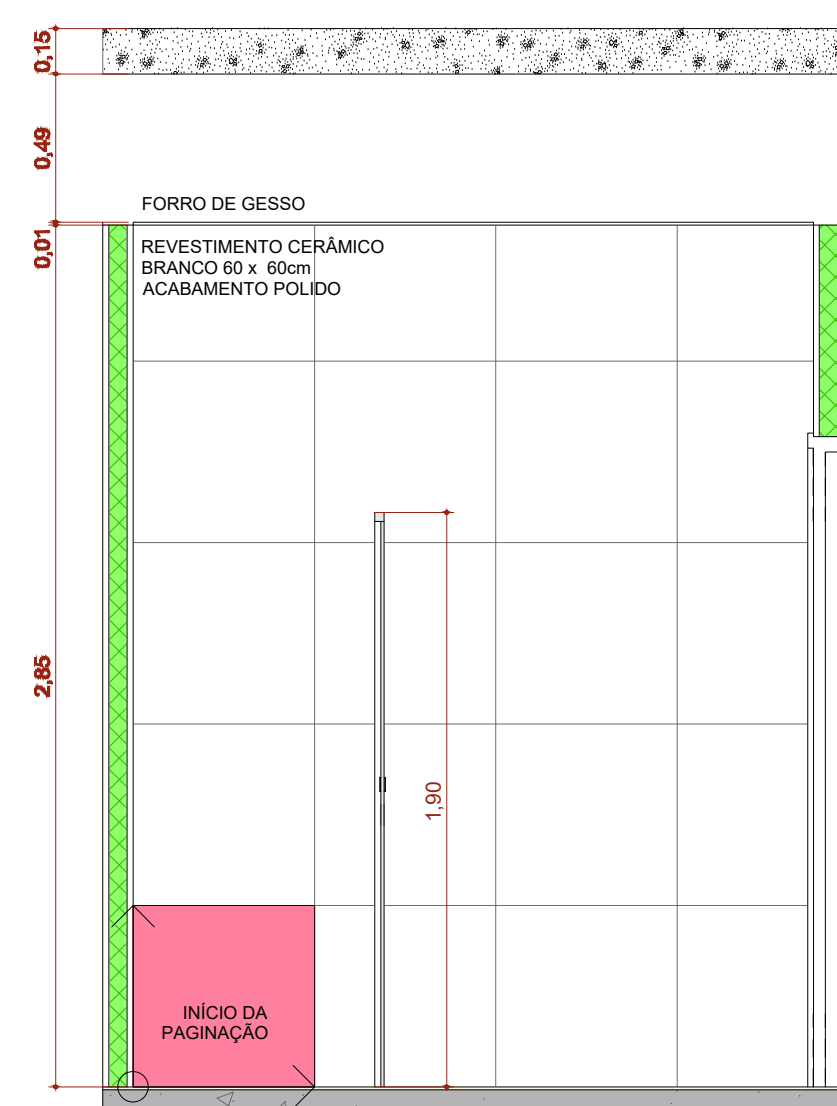
A.M.08 VISTA 1

Escala: 1:25



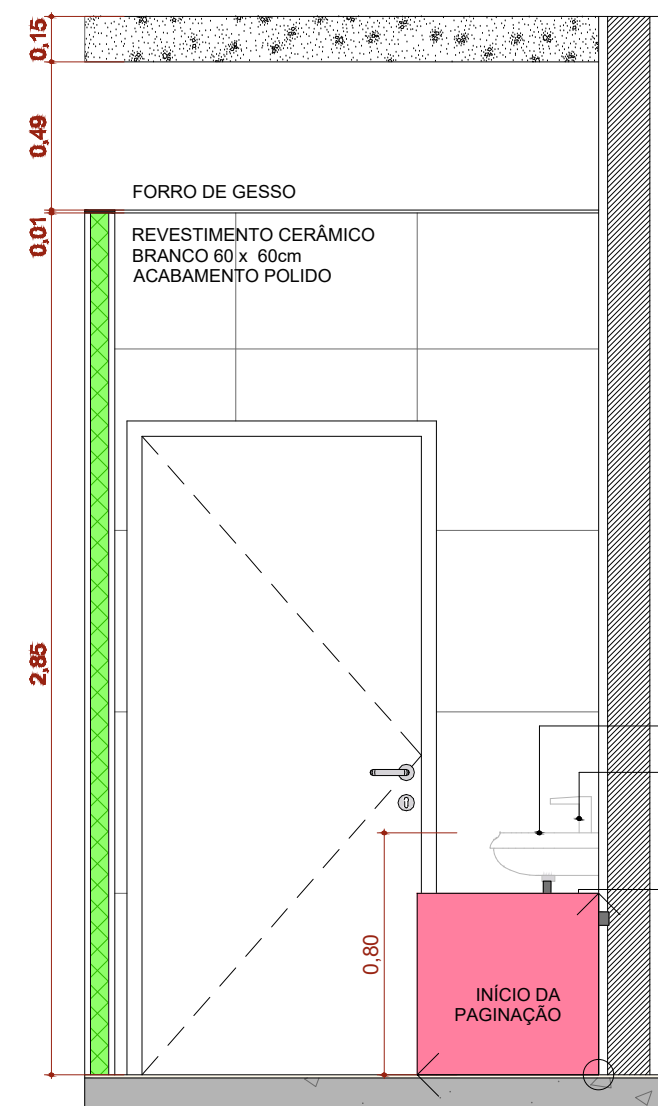
A.M.08 VISTA 2

Escala: 1:25



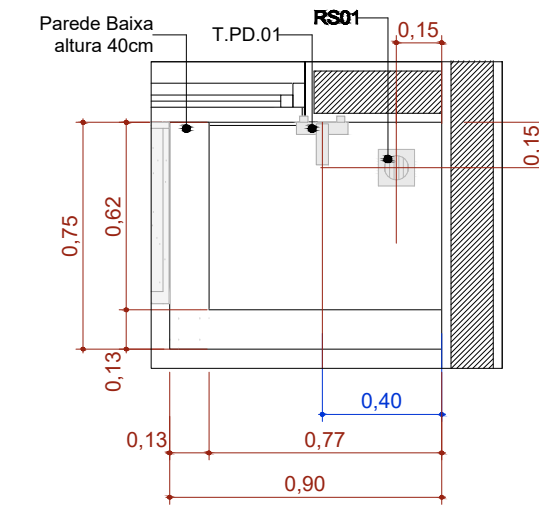
A.M.08 VISTA 3

Escala: 1:25



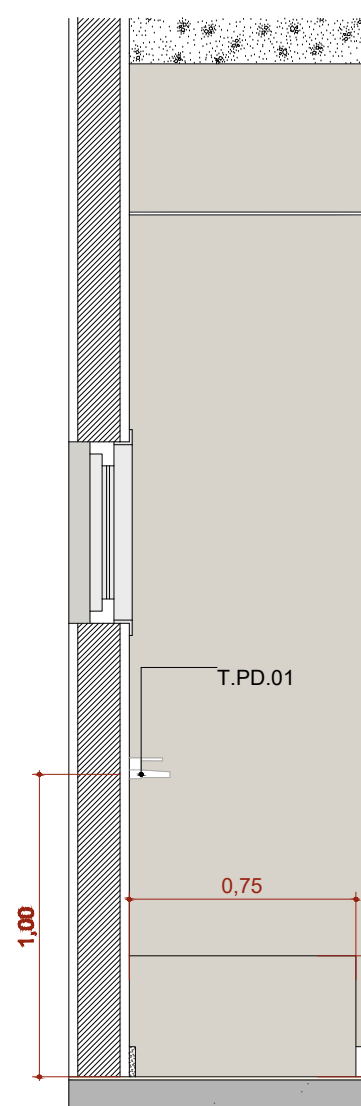
A.M.08 VISTA 4

Escala: 1:25



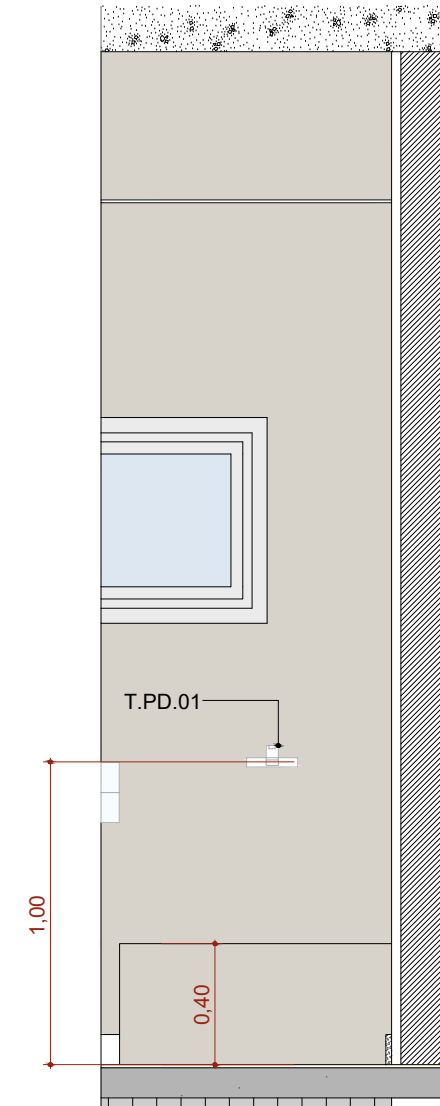
A.M.10 Higienização dos pés

Escala: 1:25



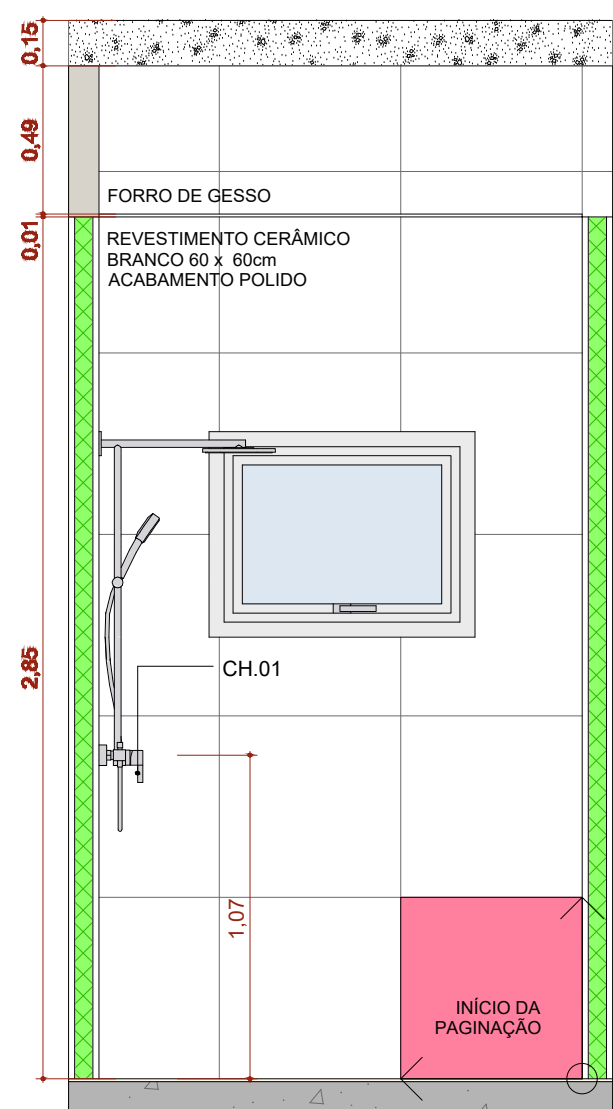
A.M.10 VISTA 1

Escala: 1:25



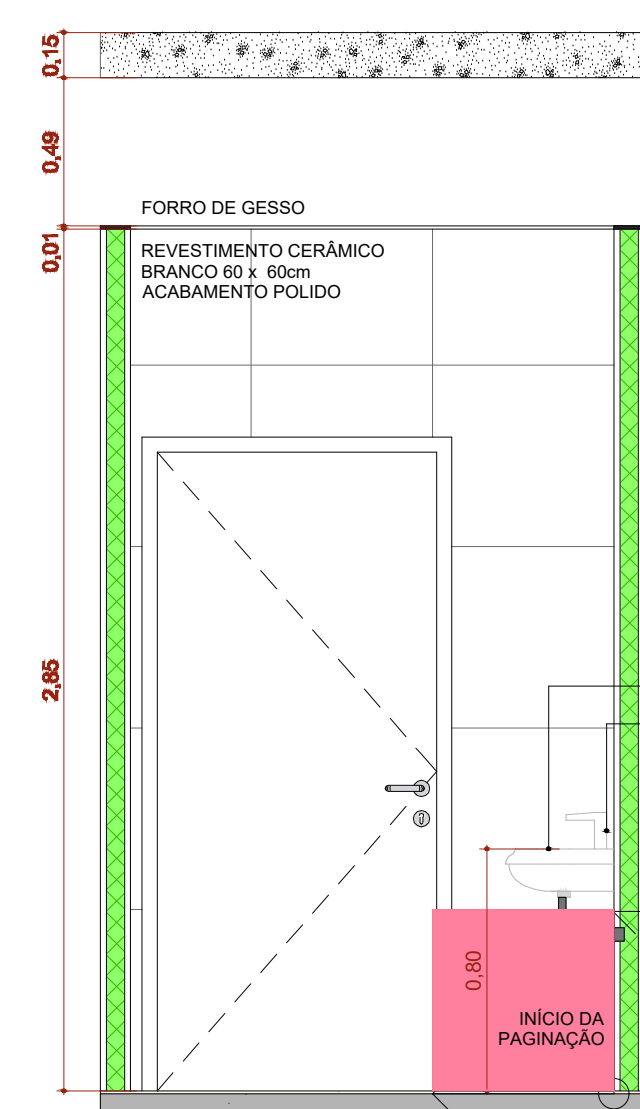
A.M.10 VISTA 2

Escala: 1:25



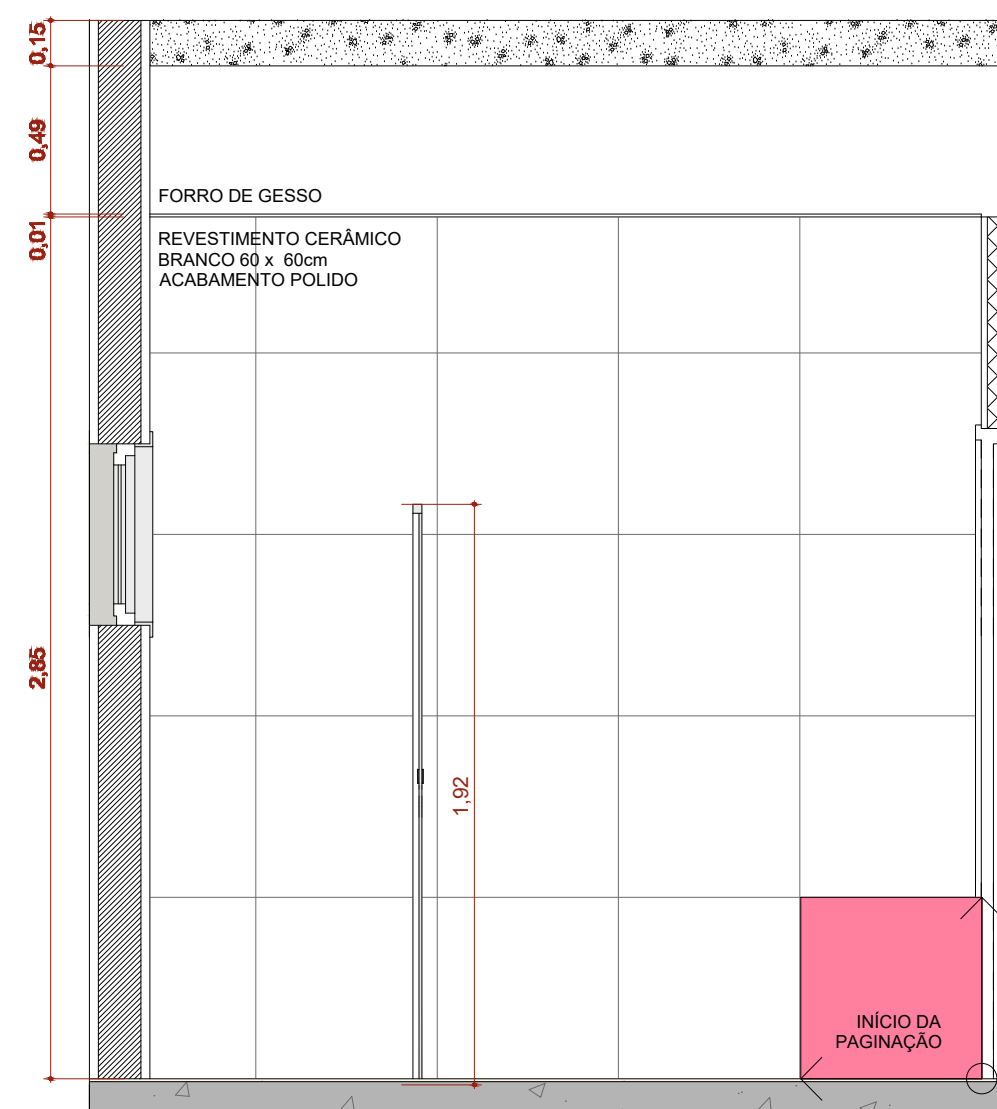
A.M.09 VISTA 1

Escala: 1:25



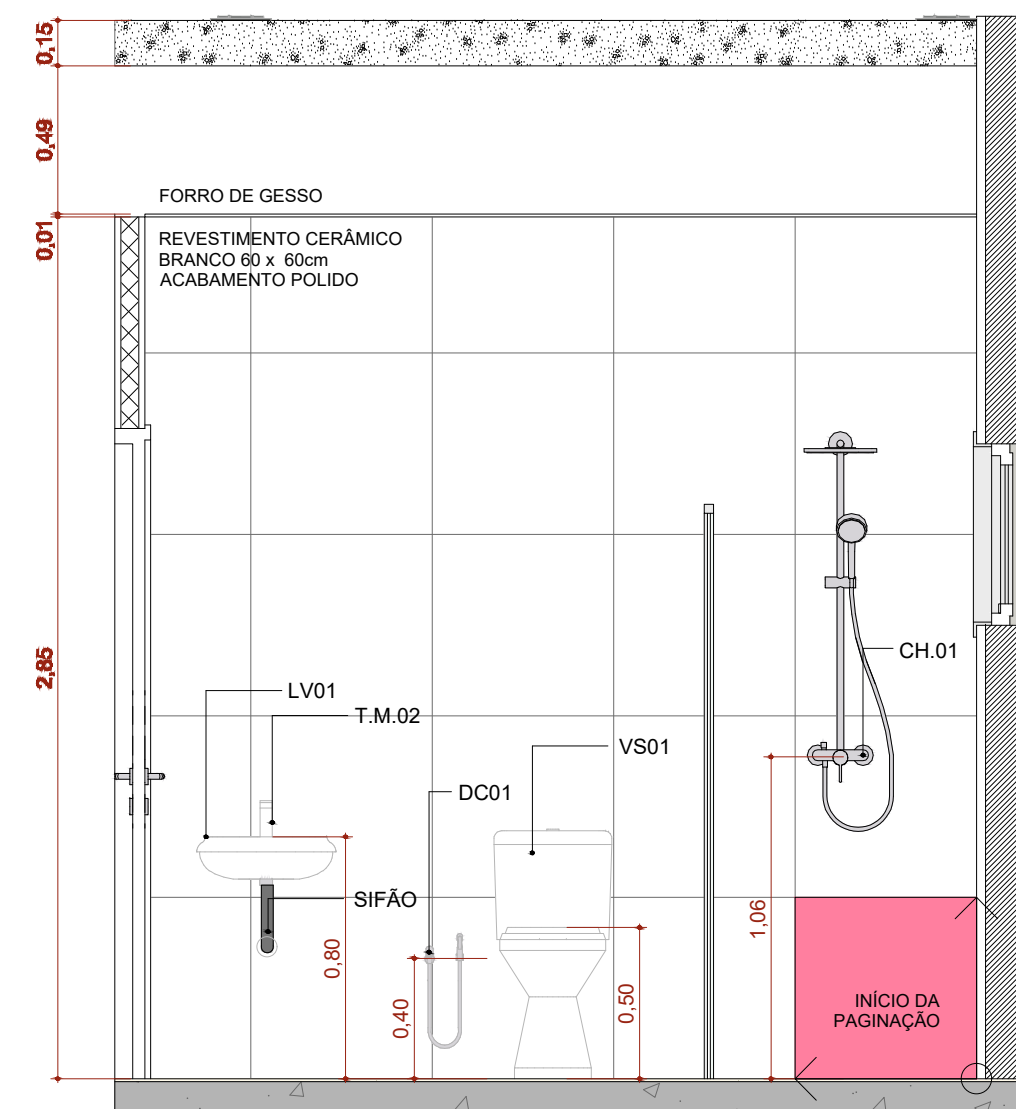
A.M.09 VISTA 2

Escala: 1:25



A.M.09 VISTA 3

Escala: 1:25



A.M.09 VISTA 4

Escala: 1:25

PLANTA-CHAVE DE SITUAÇÃO

AUTORIA DO PROJETO LOCUTADO

Engenheiro Cívil: PAULO HENRIQUE DE LIMA

RESPONSÁVEL pelo estabelecimento

NERSON HISSAO CHIHARA

REGISTRO

CREA-MG 239.515/D

CPF: 004.949.128-80

REVISÃO	DATA	EMISSION INICIAL	DESCRIÇÃO
R0	19/01/2026		

TÍTULO DO PROJETO

UNIDADE BÁSICA DE SAÚDE PORTE 1

PROPRIETÁRIO

PREFEITURA MUNICIPAL DE COROMANDEL

GESTÃO MUNICIPAL DE SAÚDE

CNPJ

18.501.149/0001-58

ENDEREÇO

Unidade Básica de Saúde: UBS Dona Nica Tomas

Rua Sebastião Dias Vital, S/N

Barro Distrito de Santa Rosa dos Dourados

CEP 38.554-899 - Coromandel - MG

TÍTULO DA PRANCHIA

DETALHAMENTO ÁREAS MOLHADAS 02

DESCRIÇÃO DA ETAPA

PROJETO EXECUTIVO

NOME: PRANCHIA - ARQUIVO

MS_LB01_PT_A0_1212_R00_DET_ÁREAS MOLHADAS 02-042

REVISÃO

R0

UNIDADE

METROS

DATA

19/01/2026

ESCALA

INDICADA

AUTORIA INTELECTUAL

Arquiteta: MIRELA PILON PESSATTI

REGISTRO

ART/RRT 14500109

DIREITOS AUTORAIS RESERVADOS CONFORME LEGISLAÇÃO NACIONAL E INTERNACIONAL

FOLHA Nº 115/2026